

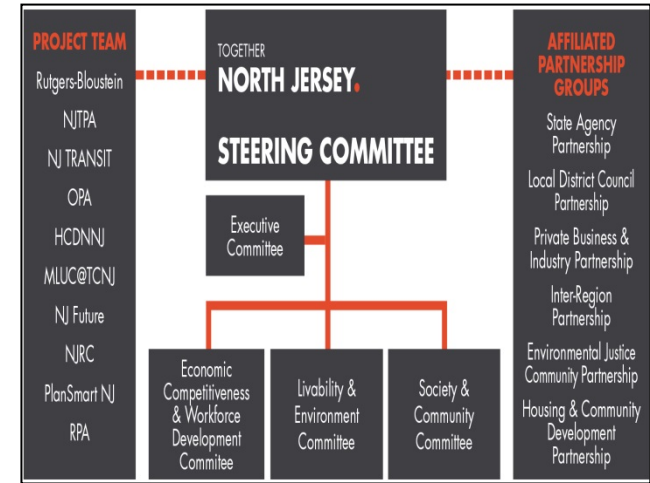
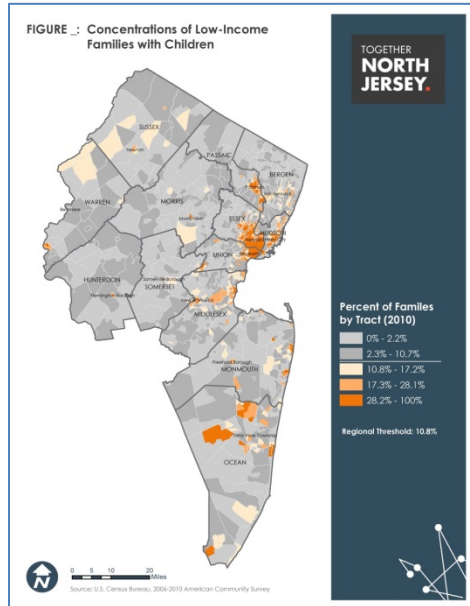
REGIONAL FAIR HOUSING & EQUITY ASSESSMENT

Status Update

Standing Committee Meeting

July 9, 2013

WHAT IS THE REGIONAL FHEA? “THE 3 Ds”



DATA ANALYSIS

- Data, Mapping & Indicators
- Recent and Planned Public Investment
- Fair Housing Activities

DELIBERATIONS

- Advisory Group
- “Discovery Phase” Workshops (NGOs)
- Regional FHEA Workshops
- Regional Meetings
- Standing Committees

DECISIONMAKING

- Steering Committee
- Executive Committee
- State Agencies
- MPOs & Transit
- County & Local Governments
- Partnership Groups

RPSD PLANNING PROCESS

“Discovery”

Where are we
now and where
are we heading?



“Visioning”

Where do we
want to go?



“Action Planning”

How do we get
there?

Regional Fair Housing & Equity Assessment

Data Analysis

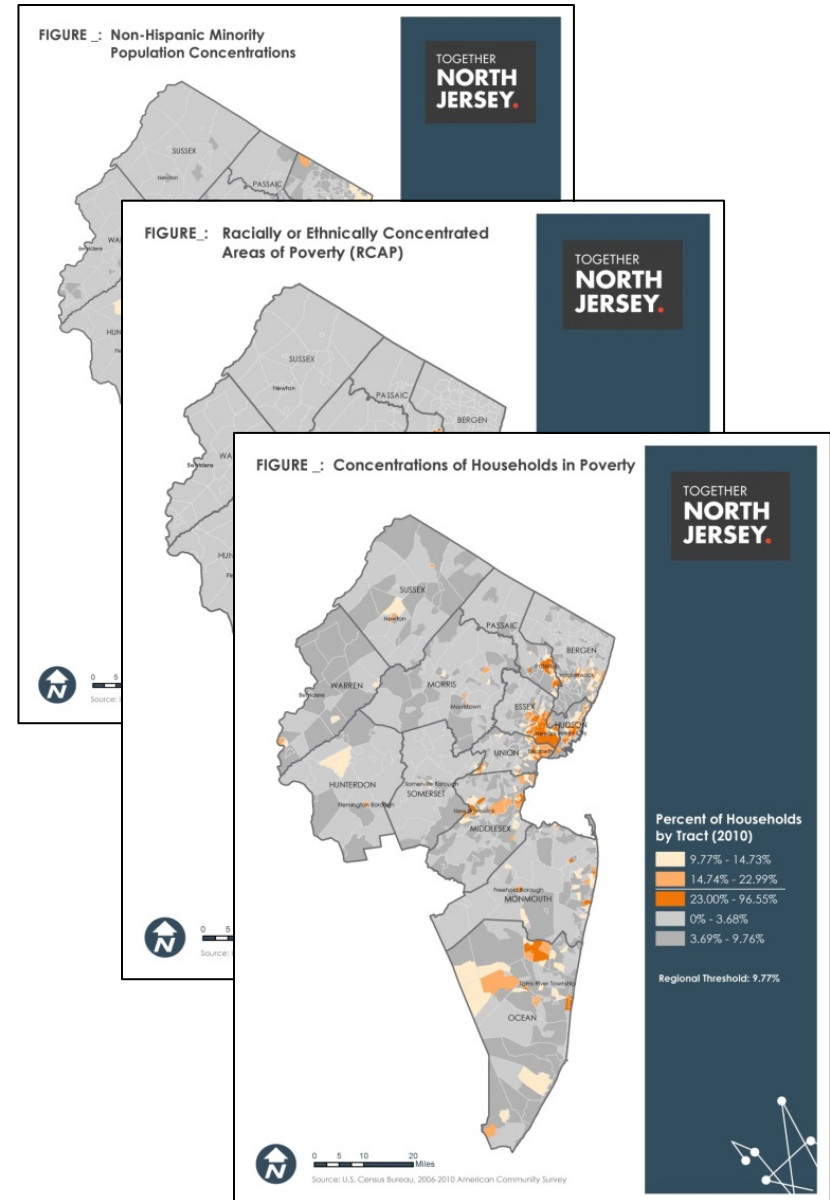
Deliberations

Decision-Making

DATA ANALYSIS

- High-level demographic snapshot of patterns/trends and geo-spatial mapping
 - Racial/ethnic integration and segregation
 - Concentrations of poverty
 - Racially concentrated areas of poverty

- Analysis of “Access to Opportunity”



GEOGRAPHIES OF OPPORTUNITY

- The FHEA will investigate “geographies of opportunity” -- places that effectively connect people to jobs, quality public schools, and other amenities.
- Today in Northern New Jersey, there are neighborhoods of concentrated poverty and segregation where zip code not only predicts poor and minority segregation, but also poor education, employment and even health outcomes. In their present state, these neighborhoods are not sustainable.
- Strategies must be developed to better connect these communities and their residents to places of opportunity as well as reinvest and strengthen existing communities to increase opportunities in-place.

DIMENSIONS + INDICATORS

- **Education**
 - Neighborhood School Proficiency
 - High School Proficiency
 - Neighborhood School Environment
 - Adult Educational Attainment
- **Poverty**
 - Poverty
- **Economic Health**
 - Labor Market Engagement
 - Job Access
 - Economic Base
- **Transportation, Access and Mobility**
 - Transit Access
 - Commute
- **Health and the Environment**
 - Access to Health Food Choices
 - Neighborhood Quality
 - Health Hazards Exposure
 - NJDEP Air Toxics Exposure
- **Housing Affordability**
 - Housing Affordability
 - Housing + Transportation Cost
 - Access to Affordable Stock
- **Vulnerability**
 - Extreme Events

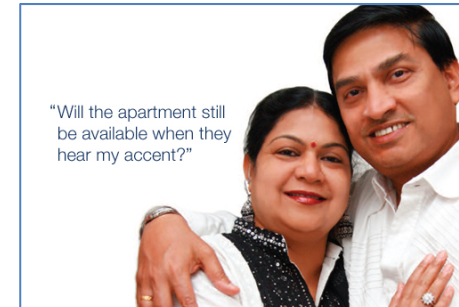
DATA ANALYSIS

- **Patterns of Public Investment**

- Economic development
- Housing & community development
- Transportation
- Rebuilding & recovery after natural disasters

- **Fair Housing Landscape**

- Adherence to non-discrimination policies & compliance with the Fair Housing Act of 1968 (as amended)
- Highlight any significant civil rights/fair housing related occurrences



REGIONAL FHEA TIMELINE

Item	Date	Status
Develop Proposed FHEA Approach	January - April 2013	<i>Completed</i>
Conduct Data Analysis and Mapping	January - Oct. 2013	<i>Underway</i>
Convene and Meet with Advisory Group	Initiated, April 2013	<i>Underway</i>
Conduct NGO “Discovery Phase” Workshops	July - Sept. 2013	<i>Underway</i>
Conduct Regional FHEA Workshops #1 - #3	July - December 2013	Dates Pending
Attend Regional Workshops – Local District Council Events	May - Sept. 2013	<i>Underway</i>
Standing Committee Meetings	June – December 2014	<i>Underway</i>